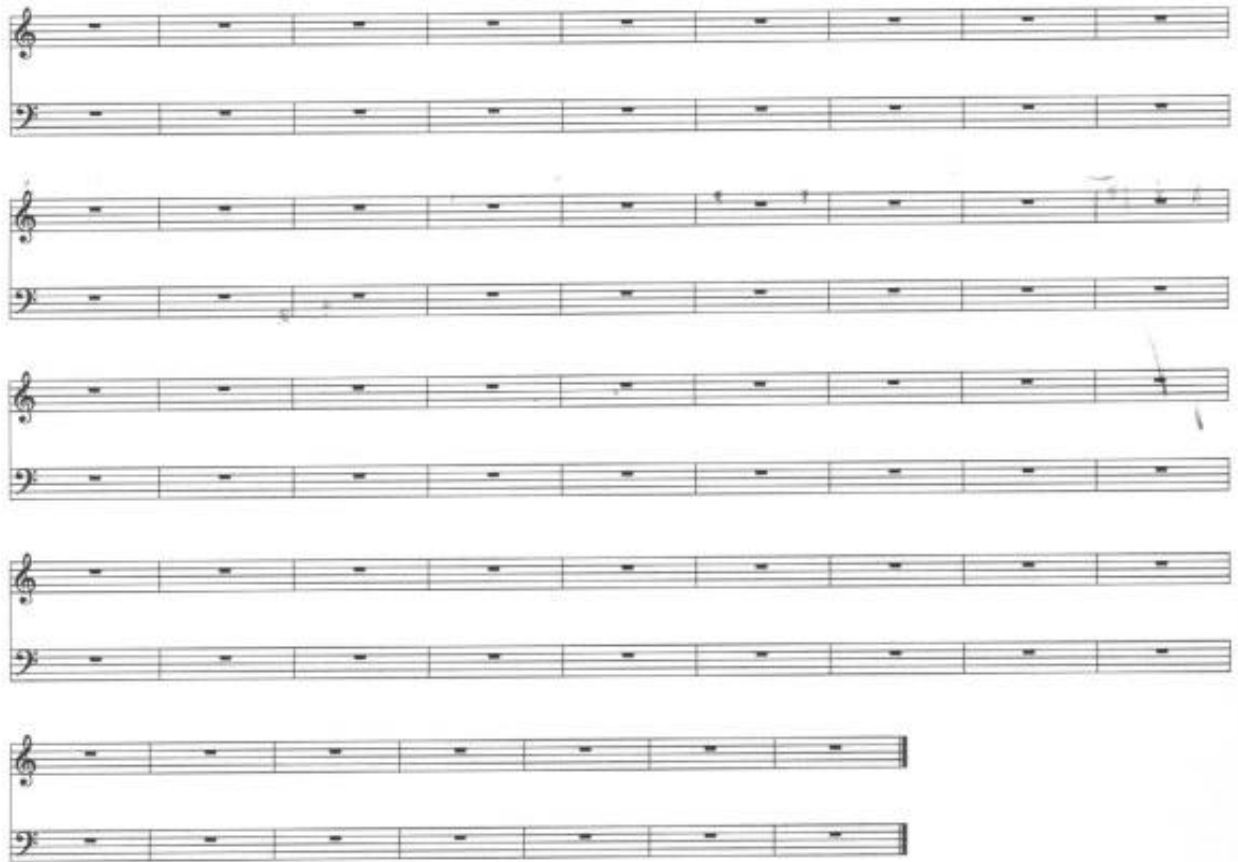


Stairway To Heaven

The image displays a musical score for the song "Stairway To Heaven". It consists of ten systems of two staves each, representing a grand staff. The first five systems (systems 1-5) are mostly empty, with only a few notes or rests visible in the upper staves. The sixth system (system 6) begins the main musical content, featuring a complex arrangement of notes, rests, and accidentals in both the upper and lower staves. The seventh system (system 7) continues this complex arrangement. The eighth system (system 8) shows a more rhythmic and melodic progression. The ninth system (system 9) continues the melodic and rhythmic development. The tenth system (system 10) concludes the visible portion of the score with a final melodic phrase and a sustained note in the lower staff.

This image shows a page of musical notation, likely for guitar, consisting of ten systems of two staves each. The first eight systems contain musical notation, while the last two systems are empty staves. The notation includes various chords, arpeggios, and melodic lines. The first system shows a complex chord structure in the treble clef and a more rhythmic bass line. The second system continues with similar chordal textures and a steady bass line. The third system features a prominent arpeggiated pattern in the treble and a melodic bass line. The fourth system has a dense chordal texture in the treble and a rhythmic bass line. The fifth system shows a mix of chords and arpeggios in the treble and a melodic bass line. The sixth system features a complex chordal structure in the treble and a rhythmic bass line. The seventh system has a dense chordal texture in the treble and a rhythmic bass line. The eighth system shows a mix of chords and arpeggios in the treble and a melodic bass line. The ninth system is an empty staff, and the tenth system is also an empty staff.



Achilles Last Stand-The Led Zeppelin Website <http://www.led-zeppelin.org/>